

INDUCTIVE

**INDUCTIVE SENSORS**

**AC + AC/DC**



**p-u-l-s-o-t-r-o-n-i-c**

## About us

---

In the traditional and strive industry region Chemnitz-Zwickau, directly at the freeway A72 you will find the new location of the Pulsotronic GmbH & Co.KG.

As a worldwide active company we develop and produce according to ISO 9001 proximity switches and electronic components for the following product ranges:

- > Inductive and Capacitive Sensors
- > Metal separation and Metal detection
- > Picture Processing
- > Optical Sensors
- > Magnetoresistive Sensors
- > Laser Systems
- > Colour Detection
- > Ultrasonic Sensors
- > X-Ray- Scanner

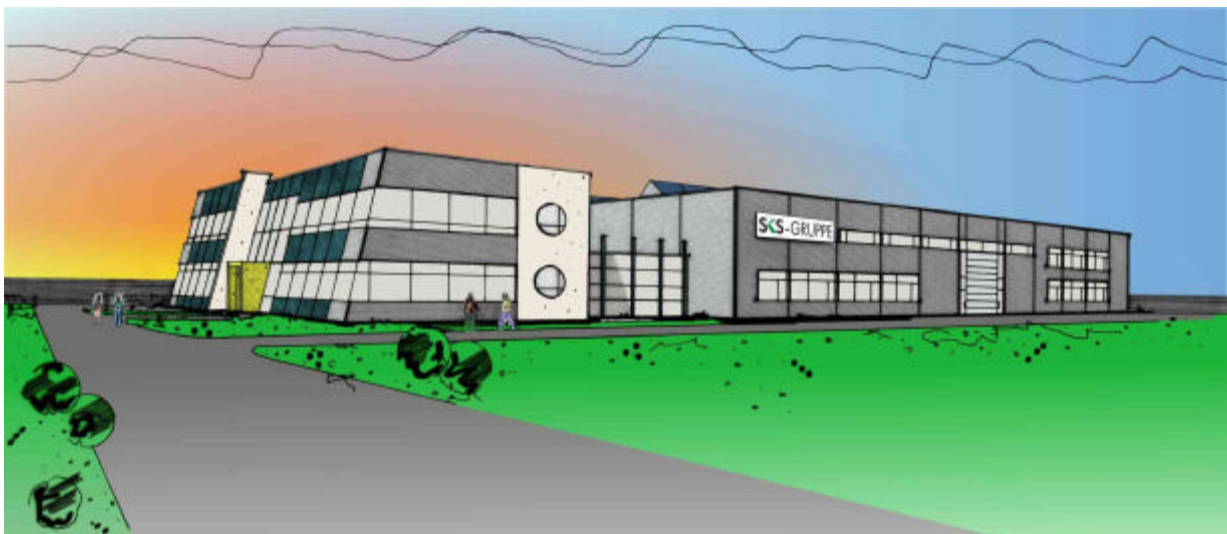
We guarantee customized solutions by our high-performance profile in the area. The available wide palette of key technologies is an ideal condition for the realization of your application.

You find the Pulsotronic everywhere there, where are to set standards and to solve task positions on the far side of well known standing types.

With innovation and individualism our competent team will advise also on place to solve your problem.

Demand us, than you will also find out:

**„Pulsotronic - Here is the solution.“**

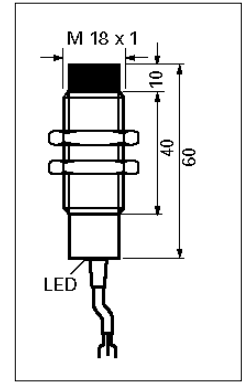
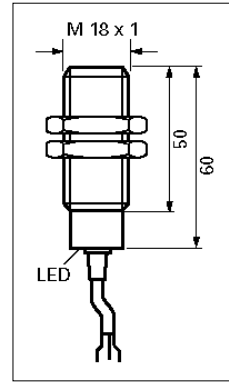
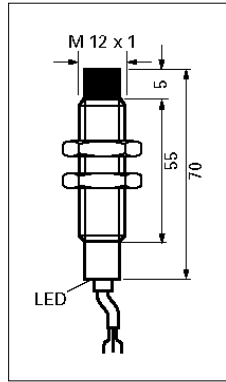
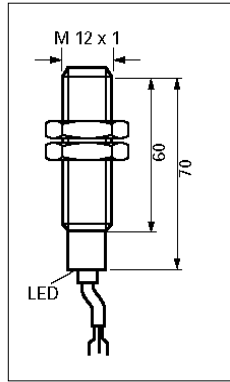


**K J 10 - M 30 M B 45 - D P S - V1 - X000**  
T T T T T T T T T T T T  
1 2 3 4 5 6 7 8 9 10 11 12

<b>1= Working principle:</b>	<b>J</b>	inductive	<b>JR</b>	inductive ring
			<b>JF</b>	inductive surface
			<b>JG</b>	inductive slot
			<b>JD</b>	full metal
	<b>C</b>	capacitive		
	<b>M</b>	magneto-resistive		
<b>2= Switching distance / range</b>				
<b>3= Design:</b>	<b>M</b>	cylindrical housings with metrical thread		
	<b>G</b>	cylindrical housings without thread		
	<b>Q</b>	square housings		
	<b>D</b>	ring housings		
<b>4= Housing diameter / edge length</b>				
<b>5= Housing material:</b>	<b>M</b>	brass, nickel plated	<b>11= Kind of Connection:</b>	<b>V1</b> M8 screw / snap in
	<b>E</b>	stainless steel 1.4305		<b>V2</b> M12 metal
	<b>K</b>	plastic		<b>V2/1</b> M12 plastic
	<b>A</b>	aluminium		<b>V3</b> M5 metal
<b>6= installation type:</b>	<b>B</b>	shielded		<b>V4</b> Amphenol Tuchel
	<b>N</b>	non shielded		<b>V6</b> Brad Harrison
<b>7= Tube length:</b>		for cylindrical devices in mm		<b>V7</b> valve connector type A
<b>8= Operating voltage:</b>	<b>D</b>	DC direct-current voltage		<b>V8</b> M8 only snap in
	<b>AZ</b>	AC alternating-current voltage		<b>V9</b> M12 only snap in
	<b>VZ</b>	AC/DC all voltages		<b>V10</b> valve connector type C
				<b>V11</b> AC-connector 1/2" UNF
				<b>V12</b> M18 plastic
				<b>VE</b> Euchner connector
				<b>ZW</b> termination box 90°
				<b>RS232</b> data interface
				<b>PG</b> thread joint PG
				<b>Mxx</b> thread joint metrical
<b>9= Type of the output signal:</b>	<b>P</b>	PNP		<b>more at inquiry</b>
	<b>N</b>	NPN		
	<b>Z</b>	two-wire		
	<b>AN</b>	analog	<b>ANI</b>	current output
			<b>ANU</b>	voltage output
	<b>NA</b>	Namur		
<b>10= Function:</b>	<b>S</b>	N.O.		
	<b>Ö</b>	N.C.		
	<b>A</b>	changeover		
	<b>U</b>	switchable		
	<b>I</b>	impulse output		
	<b>D</b>	data interface		
<b>12= Addition mark:</b>	<b>SF</b>	weld field immune		
	<b>T</b>	high temperature		
	<b>FE</b>	reduction 1 to steel/iron		
	<b>NF</b>	reduction 1 to aluminium		
	<b>X</b>	customized design		
	<b>W</b>	angled sensing face / angled cable exit		
	<b>AM</b>	middle sensing face		

## Proximity switch - Connection pictures

wiring diagrams	cable- / clampconnection	connector V1 ... V9
DPS DC PNP N.O.		
DPÖ DC PNP N.C.		
DPA DC PNP changeover		
DPU DC NO/NC switchable		
DNS DC NPN N.O.		
DNÖ DC NPN N.C.		
DNA DC NPN changeover		
DNU DC NO/NC switchable		
NA Namur DIN 19234		
DZS DC 2-wire N.O.		
DZÖ DC 2-wire N.C.		
AZS / VZS AC/DC 2-wire N.O.		
AZÖ / VZÖ AC/DC 2-wire N.C.		
Analog		



**Switching Distance**  
**Mounting**

**2,0 mm**  
**Shielded**

**4,0 mm**  
**Non - Shielded**

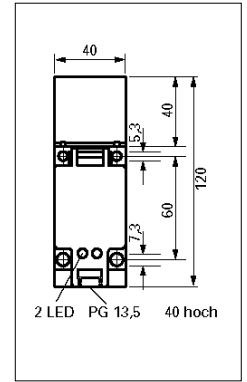
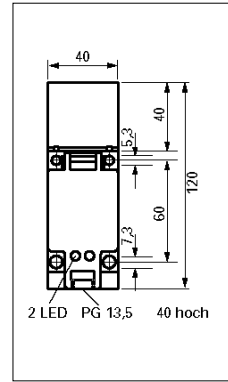
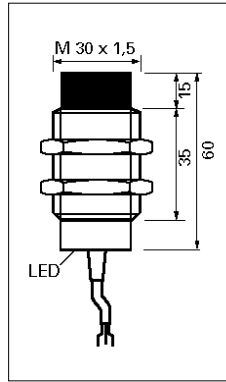
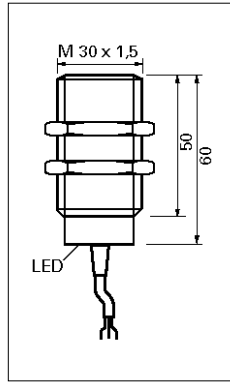
**5,0 mm**  
**Shielded**

**10,0 mm**  
**Non - Shielded**

	Type	Type	Type	Type
<b>AC Normally Open</b>	KJ2-M12MB70-AZS 9924-0500	KJ4-M12MN70-AZS 9924-0700	KJ5-M18MB60-AZS 9921-1200	KJ10-M18MN60-AZS 9921-1500
<b>AC Normally Close</b>	KJ2-M12MB70-AZÖ 9924-0400	KJ4-M12MN70-AZÖ 9924-0900	KJ5-M18MB60-AZÖ 9921-1300	KJ10-M18MN60-AZÖ 9921-1700
<b>AC/DC Normally Open</b>				
<b>AC/DC Normally Close</b>				
<b>AC/DC Switchable</b>				
<b>Operating Voltage <math>U_b</math></b>	<b>20 - 250 V AC</b>	<b>20 - 250 V AC</b>	<b>20 - 250 V AC</b>	<b>20 - 250 V AC</b>
Voltage Frequency	50/60 Hz	50/60 Hz	50/60 Hz	50/60 Hz
Voltage Drop $U_d$	$\leq 5$ V	$\leq 5$ V	$\leq 5$ V	$\leq 5$ V
<b>Max. Load Current <math>I_o</math></b>	<b>300 mA</b>	<b>300 mA</b>	<b>500 mA</b>	<b>500 mA</b>
Min. Load Current $I_{emin}$	2 mA	2 mA	2 mA	2 mA
Leakge Current $I_r$	$\leq 2$ mA	$\leq 2$ mA	$\leq 2$ mA	$\leq 2$ mA
Surge Current $I_k$	8 A (20 ms)	8 A (20 ms)	8 A (20 ms)	8 A (20 ms)
<b>Switching Frequency <math>f</math></b>	<b>15 Hz</b>	<b>15 Hz</b>	<b>15 Hz</b>	<b>15 Hz</b>
Hysteresis H	$\leq 15$ %	$\leq 15$ %	$\leq 15$ %	$\leq 15$ %
Operating Temperature $T_a$	-25°C ... +70°C	-25°C ... +70°C	-25°C ... +70°C	-25°C ... +70°C
Temperature Drift	$\leq 10$ %	$\leq 10$ %	$\leq 10$ %	$\leq 10$ %
Repeat Accuracy R	$\leq 10$ %	$\leq 10$ %	$\leq 10$ %	$\leq 10$ %
Protection Class	IP 67	IP 67	IP 67	IP 67
Switching State	LED	LED	LED	LED
EMC-Standard	EN 60947-5-2	EN 60947-5-2	EN 60947-5-2	EN 60947-5-2
Housing Material	Brass Nickel-Plated	Brass Nickel-Plated	Brass Nickel-Plated	Brass Nickel-Plated
Front Cap	PCP	PCP	PCP	PCP
Termination	Cable 3 x 0,5	Cable 3 x 0,5	Cable 3 x 0,5	Cable 3 x 0,5

More special versions by separate inquiries!

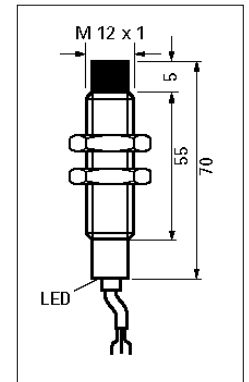
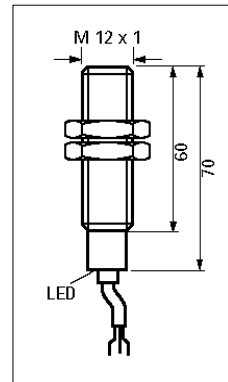
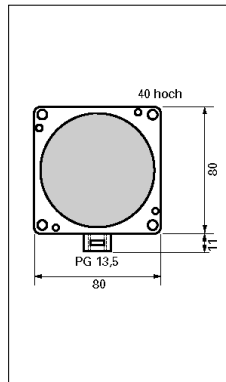
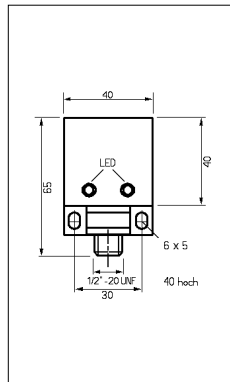
Connection and Termination picture at page 3.



Switching Distance	10,0 mm	15,0 mm	20,0 mm	40,0 mm
Mounting	Shielded	Non - Shielded	Shielded	Non - Shielded
	Type	Type	Type	Type
<b>AC Normally Open</b>	KJ10-M30MB60-AZS 9916-2600	KJ15-M30MN60-AZS 9916-2700		
<b>AC Normally Close</b>	KJ10-M30MB60-AZÖ 9916-2100	KJ15-M30MN60-AZÖ 9916-2300		
<b>AC/DC Normally Open</b>				
<b>AC/DC Normally Close</b>				
<b>AC/DC Switchable</b>			KJ20-Q40KB-VZU 9873-3000	KJ40-Q40KN-VZU 9873-0200
<b>Operating Voltage <math>U_b</math></b>	<b>20 - 250 V AC</b>	<b>20 - 250 V AC</b>	<b>20 - 250 V AC/DC</b>	<b>20 - 250 V AC/DC</b>
Voltage Frequency	50/60 Hz	50/60 Hz	50/60 Hz	50/60 Hz
Voltage Drop $U_d$	$\leq 5$ V	$\leq 5$ V	$\leq 5$ V	$\leq 5$ V
<b>Max. Load Current <math>I_o</math></b>	<b>500 mA</b>	<b>500 mA</b>	<b>400 mA</b>	<b>400 mA</b>
Min. Load Current $I_{emin}$	2 mA	2 mA	2 mA	2 mA
Leakge Current $I_r$	$\leq 2$ mA	$\leq 2$ mA	$\leq 2$ mA	$\leq 2$ mA
Surge Current $I_k$	8 A (20 ms)	8 A (20 ms)	8 A (20 ms)	8 A (20 ms)
<b>Switching Frequency <math>f</math></b>	<b>15 Hz</b>	<b>15 Hz</b>	<b>15 Hz</b>	<b>15 Hz</b>
Hysteresis H	$\leq 15$ %	$\leq 15$ %	$\leq 15$ %	$\leq 15$ %
Operating Temperature $T_a$	-25°C ... +70°C	-25°C ... +70°C	-25°C ... +70°C	-25°C ... +70°C
Temperature Drift	$\leq 10$ %	$\leq 10$ %	$\leq 10$ %	$\leq 10$ %
Repeat Accuracy R	$\leq 10$ %	$\leq 10$ %	$\leq 10$ %	$\leq 10$ %
Protection Class	IP 67	IP 67	IP 67	IP 67
Switching State	LED	LED	2 LEDS	2 LEDS
EMC-Standard	EN 60947-5-2	EN 60947-5-2	EN 60947-5-2	EN 60947-5-2
Housing Material	Brass Nickel-Plated	Brass Nickel-Plated	PA 6.6 (GV 30)	PA 6.6 (GV 30)
Front Cap	PCP	PCP		
Termination	Cable 3 x 0,5	Cable 3 x 0,5	Terminal 1,5	Terminal 1,5

More special versions by separate inquiries!

Connection and Termination picture at page 3.



**Switching Distance**  
**Mounting**

**15,0 mm**  
**Shielded**

**50,0 mm**  
**Non - Shielded**

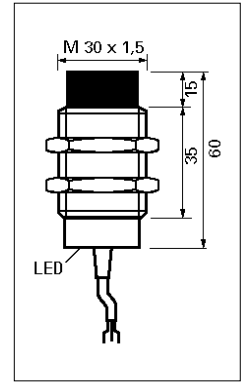
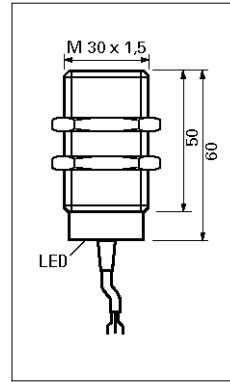
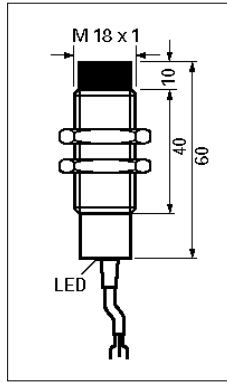
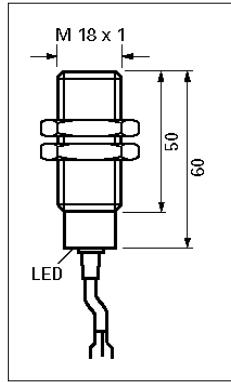
**2,0 mm**  
**Shielded**

**4,0 mm**  
**Non - Shielded**

	Type	Type	Type	Type
<b>AC Normally Open</b>				
<b>AC Normally Close</b>				
<b>AC/DC Normally Open</b>			KJ2-M12MB70-VZS	KJ4-M12MN70-VZS
<b>AC/DC Normally Close</b>			KJ2-M12MB70-VZÖ	KJ4-M12MN70-VZÖ
<b>AC/DC Switchable</b>	SJ15-Q40KB40-VZU-V11	SJ50-Q80KN-VZU		
<b>Operating Voltage <math>U_b</math></b>	<b>20 - 250 V AC/DC</b>	<b>20 - 250 V AC/DC</b>	<b>20 - 250 V AC/DC</b>	<b>20 - 250 V AC/DC</b>
Voltage Frequency	50/60 Hz	50/60 Hz	50/60 Hz	50/60 Hz
Voltage Drop $U_d$	$\leq 5$ V	$\leq 5$ V	$\leq 5$ V	$\leq 5$ V
<b>Max. Load Current <math>I_o</math></b>	<b>200 mA</b>	<b>200 mA</b>	<b>350 mA</b>	<b>350 mA</b>
Min. Load Current $I_{emin}$	2 mA	2 mA	2 mA	2 mA
Leakage Current $I_r$	$\leq 2$ mA	$\leq 2$ mA	$\leq 2$ mA	$\leq 2$ mA
Surge Current $I_k$	2,2 A (20 ms)	2,2 A (20 ms)	4,2 A (20 ms)	4,2 A (20 ms)
<b>Switching Frequency <math>f</math></b>	<b>15 Hz</b>	<b>15 Hz</b>	<b>30 Hz</b>	<b>30 Hz</b>
Hysteresis H	$\leq 15$ %	$\leq 15$ %	$\leq 15$ %	$\leq 15$ %
Operating Temperature $T_a$	-25°C ... +70°C	-25°C ... +70°C	-25°C ... +70°C	-25°C ... +70°C
Temperature Drift	$\leq 10$ %	$\leq 10$ %	$\leq 10$ %	$\leq 10$ %
Repeat Accuracy R	$\leq 10$ %	$\leq 10$ %	$\leq 10$ %	$\leq 10$ %
Protection Class	IP 67	IP 67	IP 67	IP 67
Switching State	2 LEDS	2 LEDS	2 LEDS	2 LEDS
EMC-Standard	EN 60947-5-2	EN 60947-5-2	EN 60947-5-2	EN 60947-5-2
Housing Material	PBT	PBT	Brass Nickel-Plated	Brass Nickel-Plated
Front Cap			PCP	PCP
Termination	Terminal 1,5	PG 13,5	Cable 3 x 0,5	Cable 3 x 0,5

More special versions by separate inquiries!

Connection and Termination picture at page 3.



Switching Distance	5,0 mm	8,0 mm	10,0 mm	15,0 mm
Mounting	Shielded	Non - Shielded	Shielded	Non - Shielded
	Type	Type	Type	Type
<b>AC Normally Open</b>				
<b>AC Normally Close</b>				
<b>AC/DC Normally Open</b>	KJ5-M18MB60-VZS	KJ8-M18MN60-VZS	KJ10-M30MB60-VZS	KJ15-M30MN60-VZS
<b>AC/DC Normally Close</b>	KJ5-M18MB60-VZÖ	KJ8-M18MN60-VZÖ	KJ10-M30MB60-VZÖ	KJ15-M30MN60-VZÖ
<b>AC/DC Switchable</b>				
<b>Operating Voltage <math>U_b</math></b>	<b>20 - 250 V AC</b>	<b>20 - 250 V AC</b>	<b>20 - 250 V AC</b>	<b>20 - 250 V AC</b>
Voltage Frequency	50/60 Hz	50/60 Hz	50/60 Hz	50/60 Hz
Voltage Drop $U_d$	$\leq 5$ V	$\leq 5$ V	$\leq 5$ V	$\leq 5$ V
<b>Max. Load Current <math>I_c</math></b>	<b>350 mA</b>	<b>350 mA</b>	<b>350 mA</b>	<b>350 mA</b>
Min. Load Current $I_{emin}$	2 mA	2 mA	2 mA	2 mA
Leakge Current $I_r$	$\leq 2$ mA	$\leq 2$ mA	$\leq 2$ mA	$\leq 2$ mA
Surge Current $I_k$	4,2 A (20 ms)	4,2 A (20 ms)	4,2 A (20 ms)	4,2 A (20 ms)
<b>Switching Frequency <math>f</math></b>	<b>30 Hz</b>	<b>30 Hz</b>	<b>30 Hz</b>	<b>30 Hz</b>
Hysteresis H	$\leq 15$ %	$\leq 15$ %	$\leq 15$ %	$\leq 15$ %
<b>Operating Temperature <math>T_s</math></b>	<b>-25°C ... +70°C</b>	<b>-25°C ... +70°C</b>	<b>-25°C ... +70°C</b>	<b>-25°C ... +70°C</b>
Temperature Drift	$\leq 10$ %	$\leq 10$ %	$\leq 10$ %	$\leq 10$ %
Repeat Accuracy R	$\leq 10$ %	$\leq 10$ %	$\leq 10$ %	$\leq 10$ %
Protection Class	IP 67	IP 67	IP 67	IP 67
Switching State	2 LEDS	2 LEDS	2 LEDS	2 LEDS
EMC-Standard	EN 60947-5-2	EN 60947-5-2	EN 60947-5-2	EN 60947-5-2
Housing Material	Brass Nickel-Plated	Brass Nickel-Plated	Brass Nickel-Plated	Brass Nickel-Plated
Front Cap	PCP	PCP	PCP	PCP
Termination	Cable 3 x 0,5	Cable 3 x 0,5	Cable 3 x 0,5	Cable 3 x 0,5

More special versions by separate inquiries!

Connection and Termination picture at page 3.



A large empty rectangular box with a black border, intended for taking notes.

## Table of Contents

Type	Art-Nr.	Site	Type	Art-Nr.	Site
<b>M 12</b>			<b>M 30</b>		
KJ2-M12MB70-AZS	08317240500	4	KJ10-M30MB60-AZS	08317162600	5
KJ2-M12MB70-AZÖ	08317240400	4	KJ10-M30MB60-AZÖ	08317162100	5
KJ2-M12MB70-VZS	08317250500	6	KJ10-M30MB60-VZS	08317172600	7
KJ2-M12MB70-VZÖ	08317250400	6	KJ10-M30MB60-VZÖ	08317172100	7
KJ4-M12MN70-AZS	08317240700	4	KJ15-M30MN60-AZS	08317162700	5
KJ4-M12MN70-AZÖ	08317240900	4	KJ15-M30MN60-AZÖ	08317162300	5
KJ4-M12MN70-VZS	08317250700	6	KJ15-M30MN60-VZS	08317172700	7
KJ4-M12MN70-VZÖ	08317250900	6	KJ15-M30MN60-VZÖ	08317172300	7
<b>M 18</b>			<b>Q 40</b>		
KJ5-M18MB60-AZS	08317211200	4	SJ15-Q40KB40-VZU-V11	08313401590	6
KJ5-M18MB60-AZÖ	08317211300	4	KJ20-Q40KB-VZU	08317730000	5
KJ5-M18MB60-VZS	08317211500	7	KJ40-Q40KN-VZU	08317730200	5
KJ5-M18MB60-VZÖ	08317211700	7			
KJ10-M18MN60-VZS	08317231500	7	<b>Q 80</b>		
KJ10-M18MN60-VZÖ	08317231700	7	SJ50-Q80KN-VZU	08313705090	6
KJ10-M18MN60-AZS	08317231200	4			
KJ10-M18MN60-AZÖ	08317231300	4			

**AUSTRALIA**

PCA Plant Control & Automation Pty  
LTD  
Unit 3 No. 3 Hunter Street  
2077 Hornsby NSW  
Tel. 00 61 / 29 48 23 73 3  
Fax 00 61 / 29 47 66 82 2  
E-mail: sales@pca-us.com.au

**CZECH REPUBLIC**

Bibus S.R.O.  
Videnská 125  
63927 Brno  
Tel. 00 42 / 05 47 12 53 24  
Fax 00 42 / 05 47 12 53 10  
E-mail: duchon@bibus.cz

**FRANCE**

Verco France  
32, Rue Commandant Fuzier  
Tel. 00 33 / 47 28 44 10 5  
Fax 00 33 / 47 86 26 02 3  
E-mail: verco@alyon.org

**ITALY**

Tritecnica S.R.L.  
Viale Lazio 26  
20135 Milano  
Tel. 00 39 / 02-54 19 45 2  
Fax 00 39 / 02-55 18 12 97  
E-mail: info@tritecnica.it

**NETHERLANDS**

Solar Elektro B.V.  
Effect 5  
6921 RG Duiven  
Tel. 00 31 / 26 36 52 91  
Fax 00 31 / 26 36 52 34 6  
E-mail: algemeen@beng.nl

**SPAIN**

Automatica Electronica  
Y Control S.L.  
08018 Barcelona  
Tel. 00 34 / 93 48 50 034  
Fax 00 34 / 93 48 50 296  
E-mail: p.dalmases@automatica-elec.es

**SWEDEN**

Tillquist Elteknik AB  
Finlandsgatan 16  
16422 Kista  
Tel. 00 46 / 8-59 46 32 00  
Fax 00 46 / 8-75 13 69 5  
E-mail: info@tillquisteltechnik.se

**SWITZERLAND**

Ymatron AG  
Brüelstraße 7  
8157 Dielsdorf  
Tel. 0041 / 18 55 23 88  
Fax 0041 / 18 55 23 81  
Email: info@ymatron.ch

**USA**

Altech Corp.  
35 Royal Road  
08822 Flemington NJ-6000  
Tel. 00 1 / 90 88 06 94 00  
Fax 00 1 / 90 88 06 94 9  
E-mail: info@altechcorp.com

**BELGIUM**

Bintz Technics N.V.  
Business Park  
Brixtonlaan 25  
1930 Zaventem  
Tel. 00 32 / 27 20 49 16  
Fax 00 32 / 27 20 37 50  
E-Mail: beyens@bintz-technics.be

**DENMARK**

Scancomp  
Bøgedals Allé 18  
DK 5250 Odense SV  
Tel. 00 45 / 66 11 29 89  
Fax 00 45 / 66 11 29 63  
E-mail: mh@scancomp.dk  
Internet: www.scancomp.dk

**GREECE**

Panayiotis Vassiliou S.A.  
91, Achamon  
10440 Athen  
Te. 00 30 / 21 05 22 27 11  
Fax 0030 / 21 05 24 67 5  
E-mail: vasben@otenet.gr

**JAPAN**

System Electronic Co. Ltd.  
2-13-3 Yayoi- Bunkyo-Ku  
Tokyo  
Tel. 0081 / 3 5803 7151  
Fax 0081 / 3 5803 7152  
E-mail: Isao@system-electronic-japan.co.jp

**POLAND**

P.W. Romex  
Roman Siecla  
UL. Wzlotowa 5  
60411 Poznan  
Tel. 00 48 / 61 84 17 82 4  
Fax 00 48 / 61 84 36 34 3  
E-mail: siecla.r@pwrromex.com.pl

**SOUTH KOREA**

EURO Corperation  
Room Nr. 103  
Tae Sung BLDG 199-1  
Jangsa-Dorg Jongro-Ku  
Tel. 00 82 / 2-22 63 14 96 7  
Fax 00 82 / 2-22 63 14 98  
E-mail: europilz@chol.com

**SWITZERLAND**

Quarz AG  
Wiesenstraße 2  
8617 Mönchaltorf  
Tel. 00 41 / 19 48 18 48  
Fax 00 41 / 19 48 09 09  
E-mail: robo@quarz.ch

**SOUTH AFRICA**

Countapulse Controls  
Pty. Ltd.  
P.O. Box 40393  
Cleveland, 2022  
Tel. 00 27 / 11-61 57 55 6  
Fax 00 27 / 11-61 57 51 3  
E-mail: clive@countapulse.co.za

**CANADA**

Sircon Controls Ltd.  
5359 Timberlea Blvd., Unit 36  
L4W4N5 Ontario  
Tel. 00 1 / 90 5-23 89 50 5  
Fax 00 1 / 90 5-23 88 38 0  
E-mail: info@sirconcontrols.co

**FINLAND**

SKS-Automaatio Oy  
Martinkyläntie 50  
01721 Vantaa  
Tel. 00 35 8 / 9-85 26 61  
Fax 00 35 8 / 9-85 26 82 0  
E-mail: sks-automaatio@sks.fi

**ISRAEL**

E.I.D. Electronics Ltd.  
5, Saphir Street  
Ramat Gan, 52622  
Tel.00 97 / 2-3-53 43 38 0  
Fax 00 97 / 2-3-53 43 38 5  
E-mail: eidelec@attglobal.net

**NETHERLANDS**

SEN-TECH Benelux B.V.  
Middelweg 8 e  
5253 CA Nieuwkuijk  
Tel. 00 31 / 73 51 83 12 1  
Fax 00 31 / 73 51 83 12 2  
E-mail: info@sentech.nl

**SLOVAKIA**

Bibus SK S.R.O.  
Priemyselna 4  
94901 Nitra  
Tel. 00 42 / 1-3 77 41 25 25  
Fax 0042 / 1-3 77 51 67 01  
E-mail: gyenes@bibus.sk

**SWEDEN**

Octab Industrieelektronik AB  
Leif Bergquist  
Maskingatan 8B  
19560 Märsta  
Tel. 00 46 / 8-59 11 50 00  
Fax 00 46 / 8-59 11 50 01  
Email:info@octab.se

**SWITZERLAND**

Spälti Schaltgeräte AG  
Wässerstraße 25  
8340 Hinwil  
Tel. 00 41 / 1-93 88 09 0  
Fax 00 41 / 1-93 88 09 1  
E-mail: spaelti-ag@swissonline.ch

**TAIWAN**

DWO & TOM Enterprise Co.  
Majestic Trading Co. Ltd.  
No. 178-4-Sec. 2  
Chang an E. Road  
Taipei Taiwan R.O.C.  
Tel. 00 88 6 / 22 75 28 15 1  
Fax 00 88 6 / 22 75 11 86 8  
E-mail: dwotom@so-net.tw

## Distribution office:

Postcode area:  
20-29, 30, 31, 32, 38,  
49  
Uwe Reisewitz  
Waakhauserstraße 9  
D-28719 Bremen  
Phone: +49 421 / 64 26 44  
Fax: +49 421 / 64 40 28 1  
Mobile: +49 171 / 63 75 86 8

Postcode area:  
40, 41, 42, 44, 45, 46, 47, 48,  
50, 51, 52, 53, 54, 55, 56  
Christoph Gilgenberg  
Pascalstraße 22  
D-53840 Troisdorf  
Phone: +49 22 41 / 97 41 24  
Fax: +49 22 41 / 97 30 63  
Mobile: +49 171 / 63 75 86 6

Postcode area:  
33-37, 57, 58, 59, 60,,  
61, 63, 64, 65, 68, 69  
Konrad Wiegand  
Am Heydewolf 6  
D-35274 Kirchhain  
Phone: +49 64 22 / 92 29 23  
Fax: +49 64 22 / 92 29 24  
Mobile: +49 171 / 63 75 86 3

Postcode area:  
01-04, 08-10,11-19,  
338, 39  
Mark Braun  
Neue Schichtstraße 14  
D-09366 Niederdorf  
Phone: +49 37 296 / 930 203  
Fax: +49 37 296 / 930 187  
Mobile: +49 171 / 637 58 57

Postcode area:  
66, 67, 77, 78,  
79, 721, 722  
SKA Tec GmbH & Co. KG  
Dieter Schley  
Alemannenstraße 53  
D-77767 Appenweier  
Phone: +49 78 05 / 99 85 0  
Fax: +49 78 05 / 91 02 55

Postcode area:  
80, 81, 82, 83, 84, 85,  
90, 91, 94  
Adolf Hutner  
Ascherbachweg 2a  
D-85232 Neuhimmelreich  
Phone: +49 81 31 / 35 08 73  
Fax: +49 81 31 / 35 08 72  
Mobile: +49 171 / 63 75 86 2

Postcode area:  
92, 93, 95, 96, 97  
C + R Automation GmbH  
Christian Rott  
Angerzeile 16  
D-90513 Zirndorf  
Phone: +49 911 / 60 43 67  
Fax: +49 911 / 600 24 09  
Mobile: +49 170 / 798 72 39

Postcode area:  
70, 71, 72, 73, 74, 75,  
76, 86- 89  
Andreas Barth  
Riedstraße 12  
D-89269 Vöhringen  
Phone: +49 73 06 / 92 40 82  
Fax: +49 73 06 / 92 24 61  
Mobile: +49 171 / 63 75 85 6

Postcode area:  
06, 07, 98, 99  
Riese Electronic GmbH  
Thomas Schüler  
Schleizerstraße 36 - 38  
D-07937 Zeulenroda  
Phone: +49 366 28 / 725 11  
Fax: +49 366 28 / 725 17  
Mobile: +49 172 / 367 13 62



**p-u-l-s-o-t-r-o-n-i-c**

**Pulsotronic GmbH & Co. KG**

Neue Schichtstraße 14

D-09366 Niederdorf

Phone +49 37 296 / 930 200

Telefax +49 37 296 / 930 187

[info@pulsotronic.de](mailto:info@pulsotronic.de)

[www.pulsotronic.de](http://www.pulsotronic.de)