

## VACUSTAT, 2/2 NO



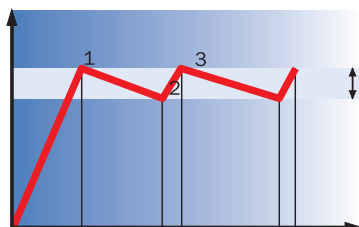
- ▶ The Vacustat is a vacuum-controlled 2/2 NO valve with adjustable vacuum level for switching.
- ▶ The Vacustat comes in two variations: Vacustat 1 with small hysteresis and Vacustat 2 with large hysteresis.
- ▶ Minimises consumption of compressed air by controlling the incoming air flow to a vacuum pump.
- ▶ The vacuum pump must be fitted with a non-return valve.
- ▶ The Vacustat is recommended for vacuum pumps in sealed systems.
- ▶ Fits PIAB vacuum pump size 5–120.

### TECHNICAL DATA

| Description               | Unit   | Value                                |
|---------------------------|--------|--------------------------------------|
| Feed pressure             | MPa    | 0.4–0.7                              |
| Material                  |        | PA, Al, SS, NBR, PUR, TPU, POM, CuZn |
| Temperature range         | °C     | 0–60                                 |
| Weight                    | g      | 90                                   |
| Connection vacuum         |        | 2 x M5                               |
| Connection compressed air |        | 2 x 1/8" NPSF                        |
| Signal range              | -kPa   | 15–99                                |
| Function                  |        | 2/2 NO                               |
| Hysteresis                | kPa    | 2/8                                  |
| Flow, nominal             | NI/s   | 8.6                                  |
| kv                        |        | 7.8                                  |
| Life span, mechanical     | cycles | >10,000,000                          |
| Diameter, nominal         | mm     | 3.7                                  |

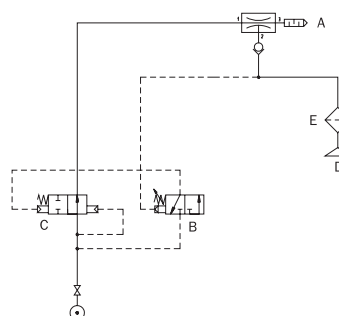
#### Function

A vacuum-controlled valve shuts off the flow of compressed air to the pump when the pre-set vacuum level is reached (1). The vacuum level is set by a knob. Because of minor leakage in a vacuum system the vacuum level drops, and after a while the start-up level of the valve is reached (2). Then the pump will start and work until the shut-off level is reached again (3), etc.



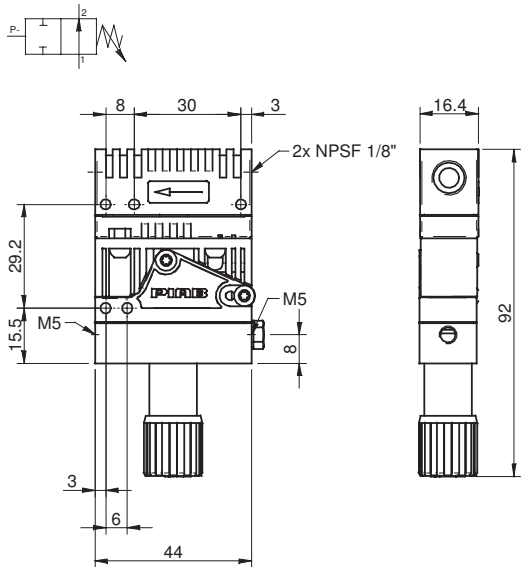
#### Connection

- A = Vacuum pump with non-return valve
- B = Vacuum switch
- C = Feed valve
- D = Suction cup
- E = Vacuum filter



ORDERING INFORMATION

| Description                      | Art. No. |
|----------------------------------|----------|
| Vacustat 1 with small hysteresis | 0101074  |
| Vacustat 2 with large hysteresis | 0101075  |



ORDERING INFORMATION, ACCESSORIES

| Description                 | Art. No. |
|-----------------------------|----------|
| Connection kit for Vacustat | 0100750  |